

Paulette M. Foerster, ACSW, LCSW
Vice President of Programs
Lutheran Family and Children's Services of Missouri
8631 Delmar
St. Louis, Missouri 63124
314-754-2776
paulettef@lfcs.org

Advocacy at Lutheran Family and Children's Services of Missouri

I. Advocacy is an agency value and a core program.

- **History**
- **Staffing**
- **Agency wide**
- **Advocacy Committee of LFCS governing board is statewide and includes two board members and 18 interested volunteers and staff.**

II. Advocacy is focused.

- **Annual priorities set by board, staff, constituents**
- **Research completed on priorities to educate and inform policy makers about impact; consequences of legislation**

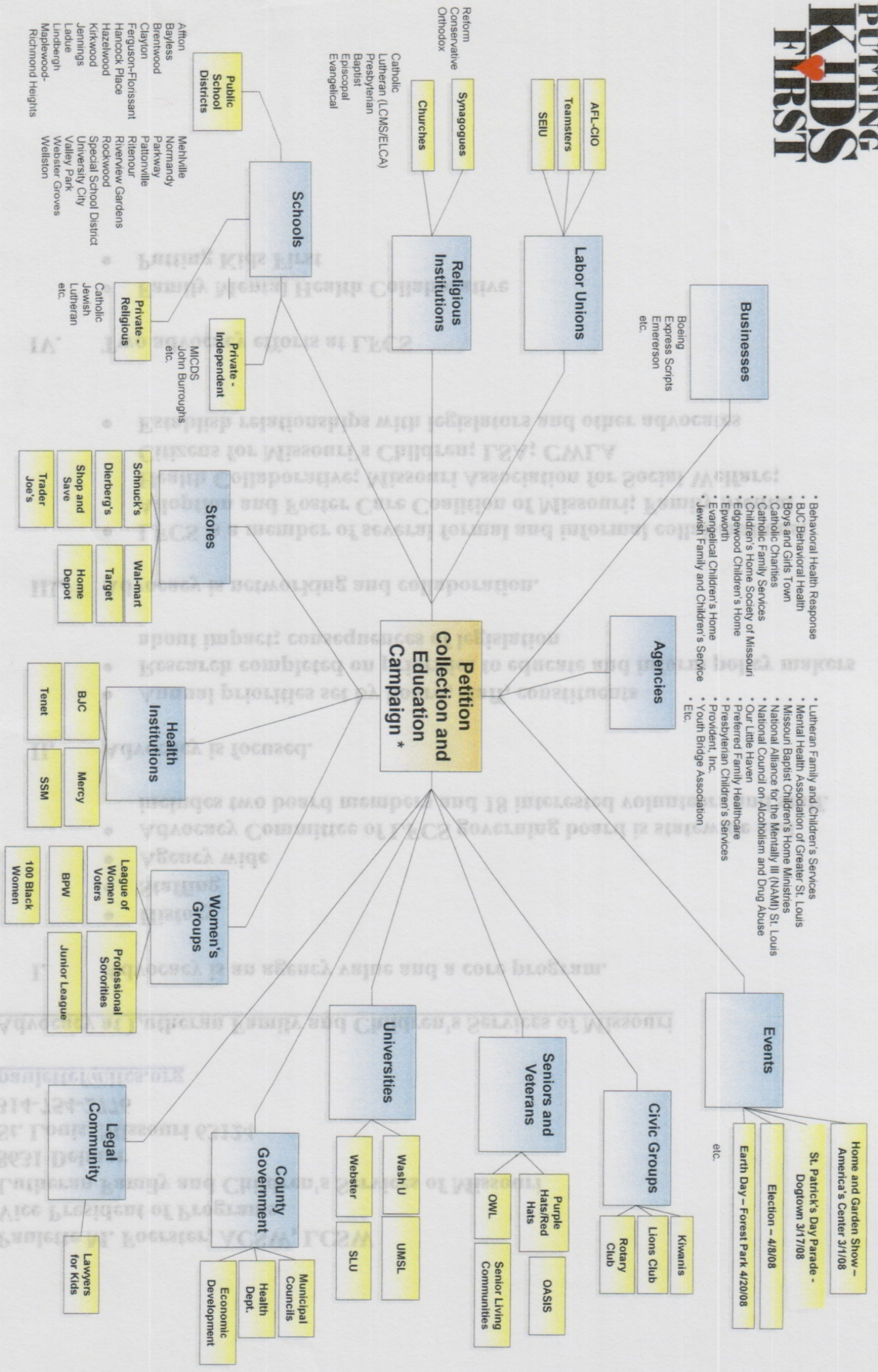
III. Advocacy is networking and collaboration.

- **LFCS is a member of several formal and informal collaborations; Adoption and Foster Care Coalition of Missouri; Family Mental Health Collaborative; Missouri Association for Social Welfare; Citizens for Missouri's Children; LSA; CWLA**
- **Establish relationships with legislators and other advocates**

IV. Two advocacy efforts at LFCS

- **Family Mental Health Collaborative**
- **Putting Kids First**





* Please note: This list is not intended to be exhaustive